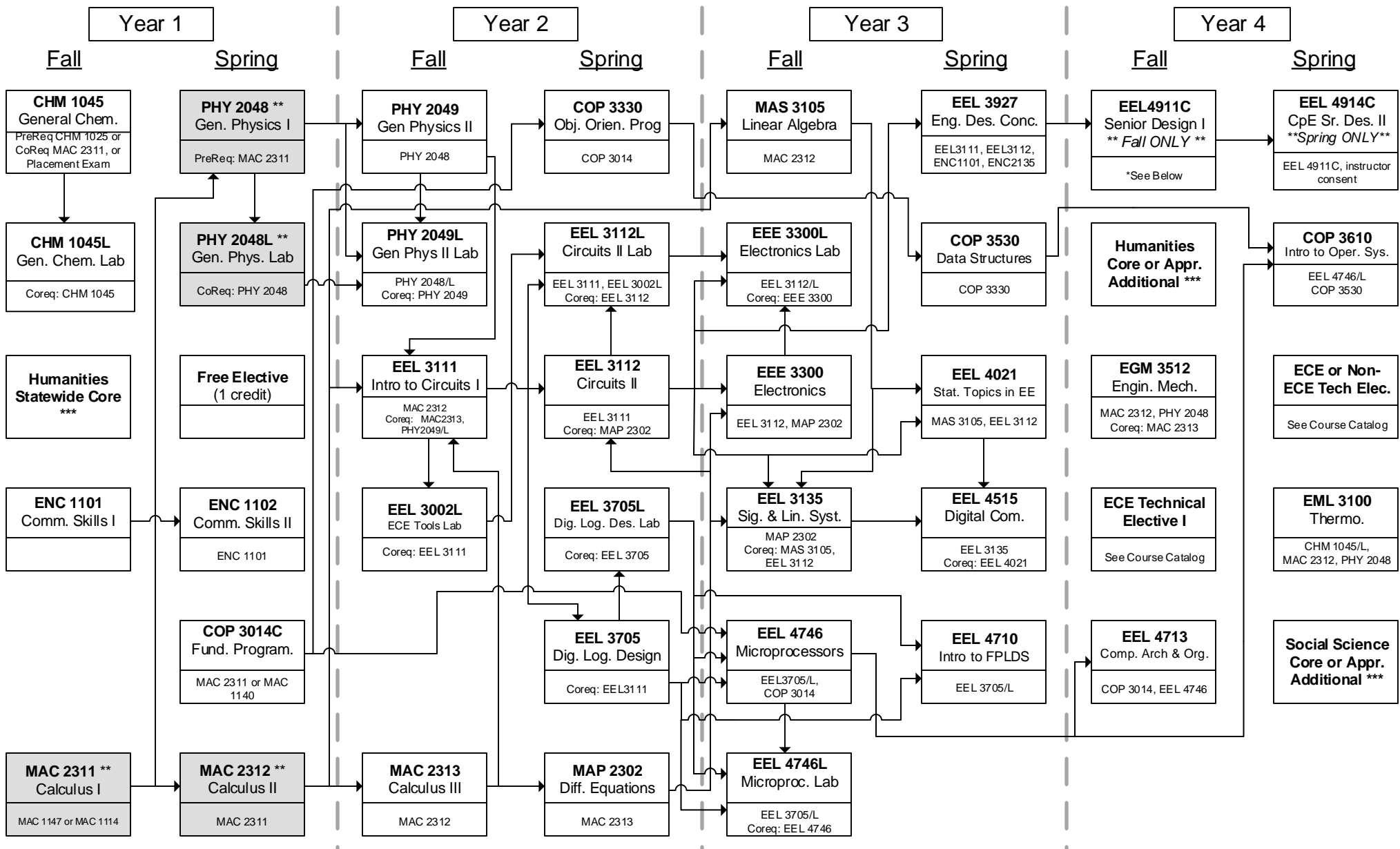




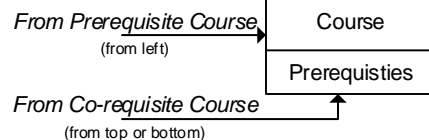
# FAMU Computer Engineering Fall 2018 and Later



### Summer

<b>AFA 2000, AFA 3104, or AMH 2091 ***</b>	<b>Social Science Statewide Core ***</b>	<b>COT 3100</b> Discrete Struct. MAC 2311
--	--	---

### Legend & Notes



\* EEL 4911C Prereq: EEL 3111, EEL 3112, EEE 3300, EEL 3705, EEL 3927, EEL 4710, EEL 4746, and COP 3530. Up to two of the prerequisites may be taken as co-requisites.

\*\* The shaded courses are pre-engineering courses and must be completed before a student can transfer into Electrical Engineering. EGN 1004L also required for students entering as freshmen.

\*\*\* Refer to the "FAMU General Education Requirements for COE Students" for detailed requirements and course lists. Students must take POS 2041 or AMH 2020 to satisfy Civic Literacy requirement.