

# MOAS Project: Wind Energy Demonstration

## Members

Nicholas Bembridge

Victor Fontecchio

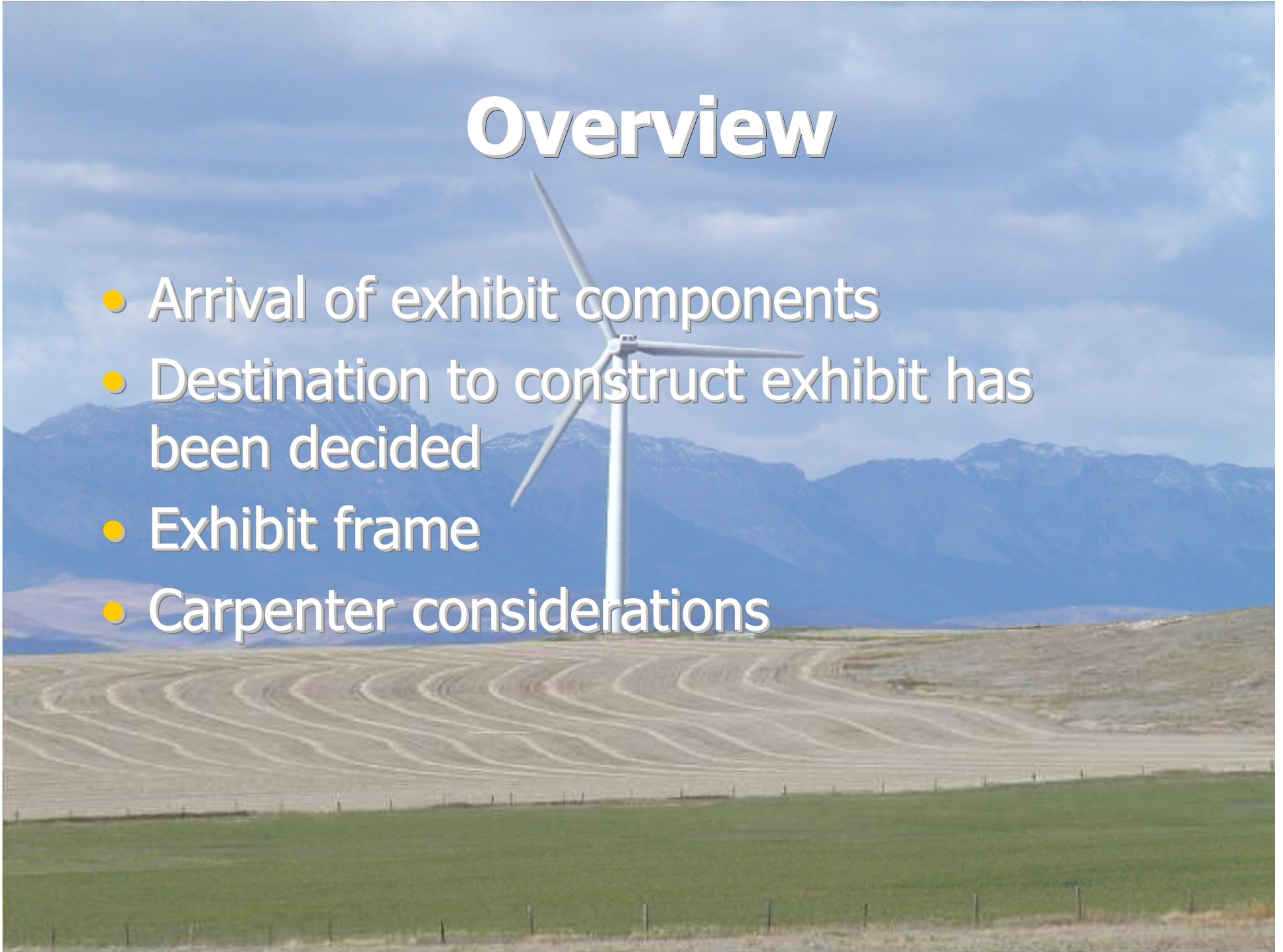
Bradley Kroger

Michael Sheehan

Suzanne Shepherd

# Overview

- Arrival of exhibit components
- Destination to construct exhibit has been decided
- Exhibit frame
- Carpenter considerations



# Arrival of Components

- All ordered components have arrived
- Anemometer should be available for pick up this week from the ME office
- Light tower circuitry ordered this week from Allied electronics

# Exhibit Fabrication Site



# Exhibit Frame

- Frame made of 80/20 aluminum framework
- Secured by washers and bolts
- No rounded outside edges due to an error in the ordering process



# Frame Construction





Finished Frame

# Carpenter

- Wood panels need to cover the non-rounded edges of the framework
- Two carpenters were contacted for wood paneling job
- Waiting for carpenters' measurements and price quotes
- Wood panels to be constructed over spring break



# Electronics

- Fan and kill switch wiring determined
- Light tower circuitry determined
- Light tower circuitry ordered
  - 2 AC adapters
  - 30 Voltage comparators
  - 5 Op amps
  - 2 Output relay boards

# Future Work

- Begin carpentry work
- Machine frame parts
- Order circuitry for light towers
- Finish construction of exhibit
- Spring final report
- Operation manual for the museum